

A
WORLD
WITHIN



CAPITAL
INDUSTRIAL
COMPLEX



""`hm \°\$\$Q>ar _Vb~
ha grPZ _o àm°\°sQ> hr àm°\°sQ>"

Set up an industry or add a unit to your existing infrastructure. This place is real gold mine of success! Closely connected with the industrial hubs of Chakan, Talegaon, Bhosari, Akurdi & Chinchwad, the set of advantages the location offers is beyond limits. The proposition becomes even more profitable when you think of the necessary parameters like transport, connectivity, octroi etc. And to top it all, Nighoje, bang opposite to Mahindra & Mahindra is a prestigious address, isn't it?

200+ Industrial Gala | 50+ Industrial Units





Legends

- | | |
|-------------------------------------|--|
| A Capital Square | G Capital Industrial Complex I |
| B Capital City | H Capital Industrial Complex II |
| C Capital Industrial Park I | I Nighoje Business Center |
| D Nighoje Logistics | J Capital Plaza |
| E Capital Industrial Park II | K Capital Mall |
| F Nighoje Logistics | L Capital International School |



CAPITAL CITY

a world within

Residential | Commercial | Industrial

Make a move.

Be blessed by a rewarding future.

Belong to a place on earth that is destined to grow every moment. Spread across whopping 30 acre on the fastest developing growth corridor of Pune, this is a paradise of good fortune & golden opportunities! Here, the residential development comprising 1 & 2 BHK, studio apartments is surrounded by educational, commercial, industrial, entertainment & leisure hubs. An office, a shop, an industrial gala or unit, a grand showroom, a well-equipped healthcare facility or a home here where every treasured happiness is within easy reach is for the forward thinking people who see beyond future and make the most of the present. Welcome to the Growth Hub.

Near Talawade IT Park,
Opp. Mahindra & Mahindra, Pune.



200+
INDUSTRIAL
GALA



CAPITAL INDUSTRIAL COMPLEX

Spread across 1 acre Plus

3 storeyed commercial complex

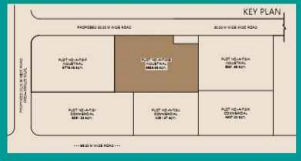
200 Industrial Gala of 500 to 1500 Sq.ft.

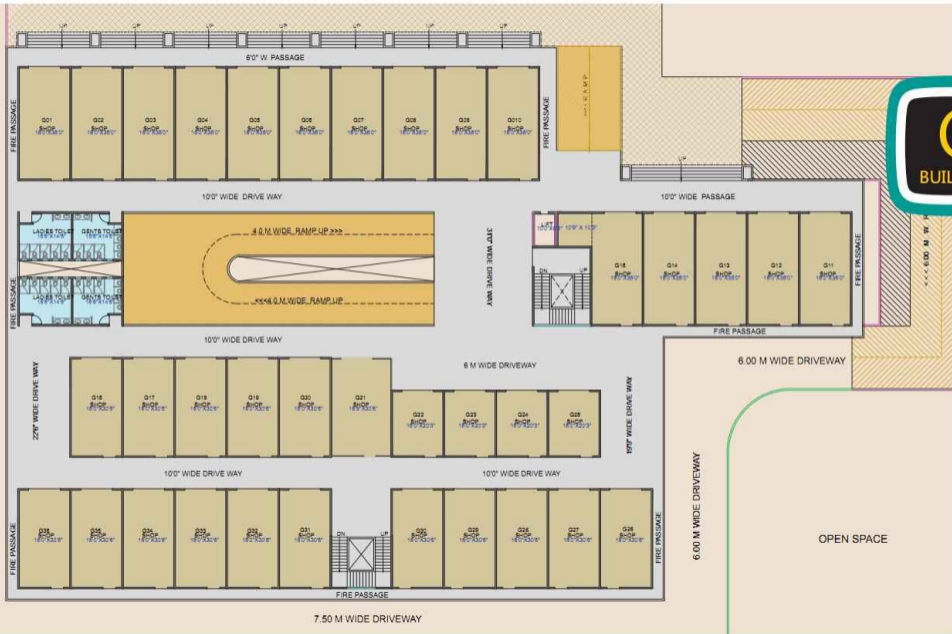
Key Features & Amenities

Parking | Fire Systems | Ramp for upper Floor

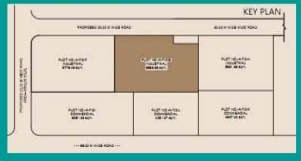


LOWER GROUND FLOOR PLAN





UPPER GROUND FLOOR PLAN

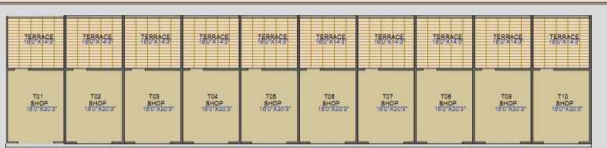


OPEN SPACE

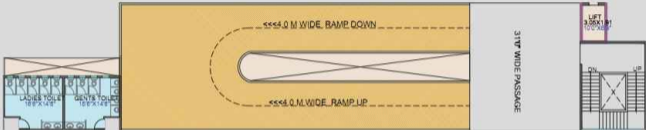


FIRST FLOOR PLAN





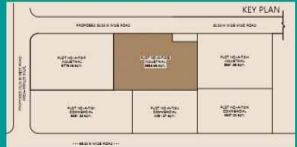
10'0" WIDE PASSAGE



TERRACE



SECOND FLOOR PLAN





UPPER GROUND FLOOR PLAN



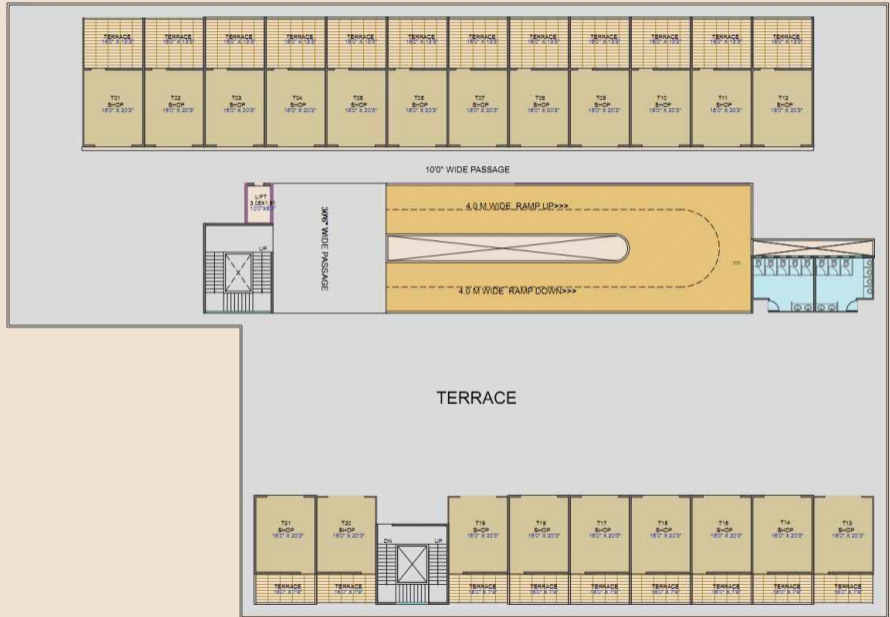


FIRST FLOOR PLAN





FIRST FLOOR PLAN



50+
INDUSTRIAL
UNITS



CAPITAL INDUSTRIAL PARK

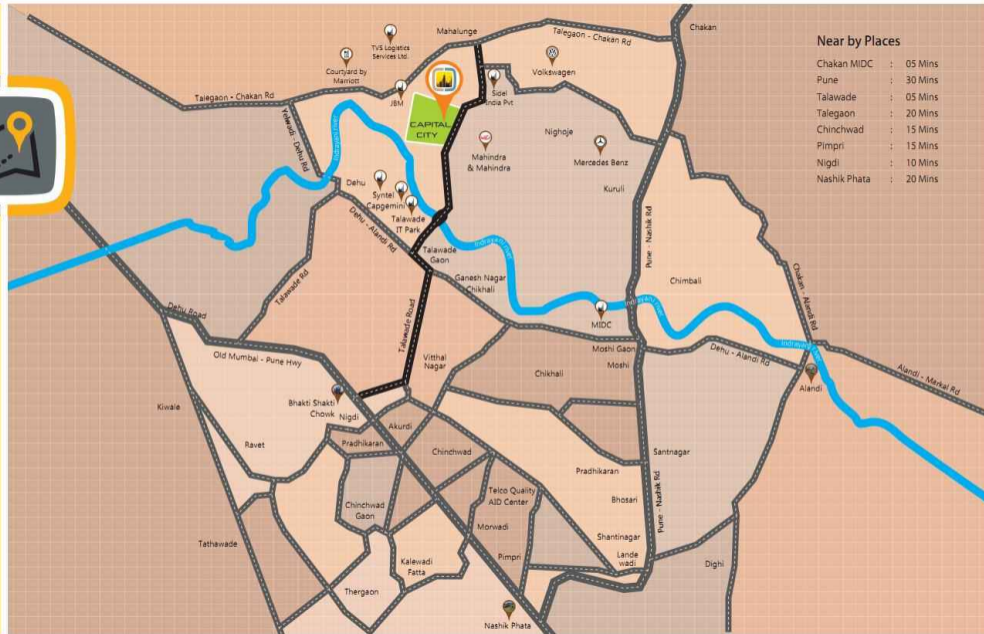
Spread across 6.5 acre Plus
50 Industrial Units of 5500 to 10000 Sq.ft.

Key Features & Amenities
Develop internal Road | Street Lights
Ample Water Supply



The Rising Location

PCMC has long been the preferred territory of the new-age, progressive families. But this location where Capital City is being constructed, is a refreshingly pleasant surprise. It is bang opposite to Mahindra & Mahindra Plant of Nighoje, simply a few seconds from Chakan-Talegaon Road. The Chakan MIDC is on a 5 minutes drive and fast-developing Talawade IT Park is at hardly any distance of just 2 kilometers. It means, Capital City is strategically placed near manufacturing & IT hubs of PCMC. Besides easy connectivity to upmarket suburbs of Nigdi, Akurdi, Bhosari, Chinchwad etc. elevate the standards of living here. So be it professional, career opportunities or an empowered lifestyle, the new rising location of PCMC upholds a wonderful living experience for sure.





Office : CTS 4441, Hotel Kundan Place, Mumbai - Pune Road, Akurdi, Pune - 35 | Ph.: 020 2724 2424

Site Address : Near Talawade IT Park, Opp. Mahindra & Mahindra, Nighoje, Pune

Ph.: 70660 40544 | 70300 03344 | Email : sales@capitalcity.co.in | website : www.capitalcity.co.in